

# Product Data Sheet



## BKS-ALST 125K-14

EAN -

ID 910102

**Pressed steel rigid caster, medium heavy duty rigs, with top plate fitting, Heavy duty wheel with Blickle Softhane® polyurethane tread, with aluminum wheel center**

### Rig:

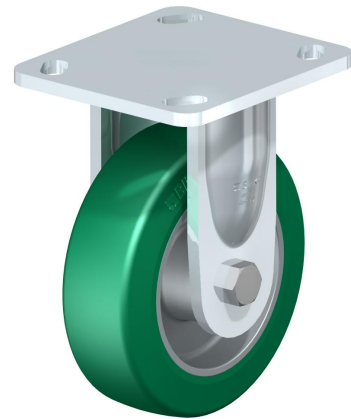
Made of pressed steel. Bolted wheel axle. Zinc-plated, blue-passivated, Cr6-free.

### Wheels:

Made of high-quality, reaction-injected polyurethane-elastomer Blickle Softhane®, very high operational comfort through the especially thick, elastic tread, low-noise operation, low rolling resistance, very good floor preservation, very high abrasion resistance, high cut and tear propagation resistance, very good chemical connection with the wheel center.

**Tread colours:** green

**Wheel center/rim:** Made of die-cast aluminum. Casted tread.



### Rolling resistance

■■■■□ Very good

### Operating noise

■■■■□ Very good

### Floor surface preservation

■■■■□ Very good

### Technical data

Plate size		101.6 x 114.3
Bolt hole spacing		76.2 x 76.2 - 92.1
Bolt hole Ø		66.7
Wheel Ø		125 mm (D)
Wheel width		40 mm (T2)
Load capacity		350 kg
Total height		155 mm (H)
Temperature resistance to		-25 ° C
Temperature resistance to		70 ° C
tread and tire hardness		75° Shore A
Bearing type		Ball bearing